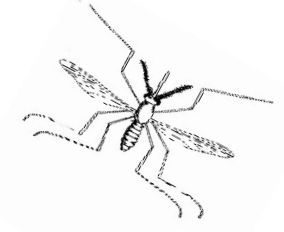
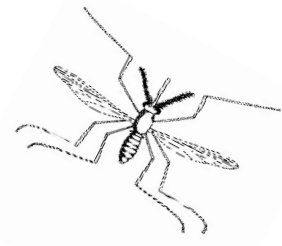
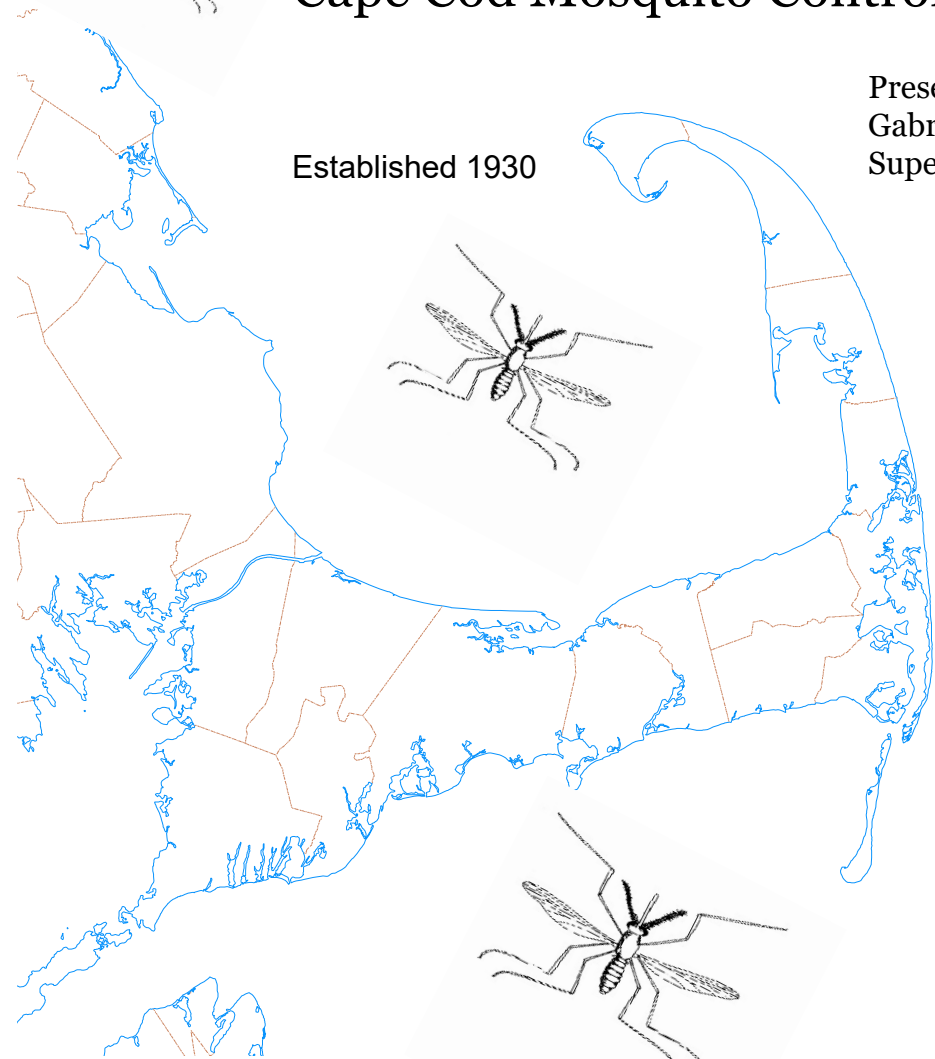


Cape Cod Mosquito Control Project

Established 1930

Presenter
Gabrielle Sakolsky, Entomologist
Superintendent



“In Truro I had been surprised at the number of large light-colored toads everywhere hopping over the dry and sandy fields, their color corresponding to that of the sand. Snakes are also common on these pure sand beaches, and **I have never been so much troubled by mosquitoes as in such localities.**”

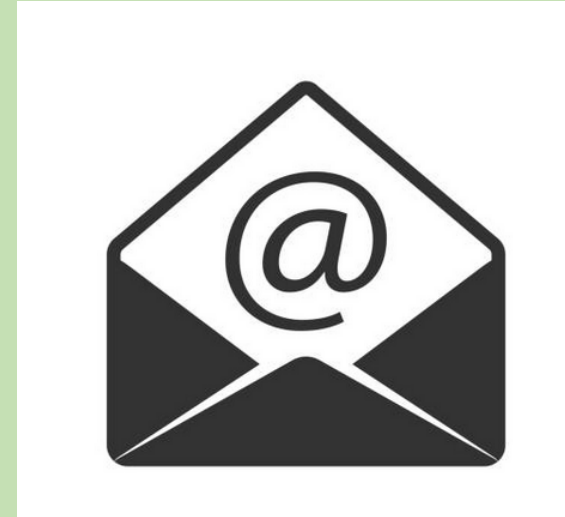
- Henry David Thoreau *Cape Cod*

Reports from Citizens: Mid - May !?!

(Town of Wellfleet and CCNS notification 5/20)



508-775-1510



ccmcp@ccmcp.net

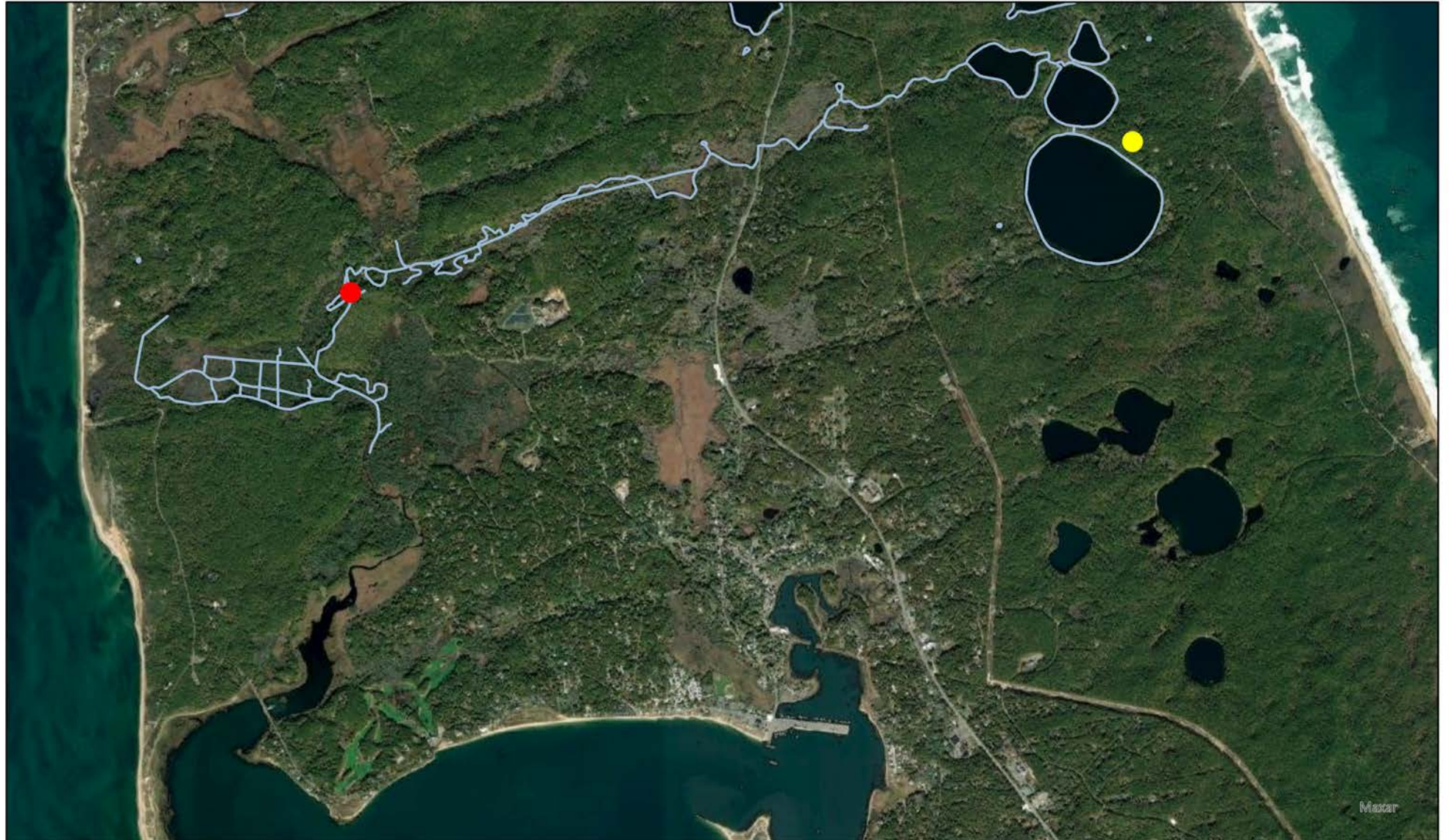
Herring River Trap Locations



HerringRiverTraps

Trap Sites

- Deiss House - Gull Pond
- Herring River
- Herring RIver



CDC Light Trap Baited with Dry ice



Audrey Russano

2021 EPI WEEK CALENDAR

Months shown in **RED** are potential "Vector" months

JANUARY							
EPI Week #	Sun	Mon	Tue	Wed	Thu	Fri	Sat
53						1	2
1	3	4	5	6	7	8	9
2	10	11	12	13	14	15	16
3	17	18	19	20	21	22	23
4	24	25	26	27	28	29	30
5	31						

JUNE							
EPI Week #	Sun	Mon	Tue	Wed	Thu	Fri	Sat
22			1	2	3	4	5
23	6	7	8	9	10	11	12
24	13	14	15	16	17	18	19
25	20	21	22	23	24	25	26
26	27	28	29	30			

NOVEMBER							
EPI Week #	Sun	Mon	Tue	Wed	Thu	Fri	Sat
44		1	2	3	4	5	6
45	7	8	9	10	11	12	13
46	14	15	16	17	18	19	20
47	21	22	23	24	25	26	27
48	28	29	30				

FEBRUARY							
EPI Week #	Sun	Mon	Tue	Wed	Thu	Fri	Sat
5		1	2	3	4	5	6
6	7	8	9	10	11	12	13
7	14	15	16	17	18	19	20
8	21	22	23	24	25	26	27
9	28						

JULY							
EPI Week #	Sun	Mon	Tue	Wed	Thu	Fri	Sat
26					1	2	3
27	4	5	6	7	8	9	10
28	11	12	13	14	15	16	17
29	18	19	20	21	22	23	24
30	25	26	27	28	29	30	31

DECEMBER							
EPI Week #	Sun	Mon	Tue	Wed	Thu	Fri	Sat
48				1	2	3	4
49	5	6	7	8	9	10	11
50	12	13	14	15	16	17	18
51	19	20	21	22	23	24	25
52	26	27	28	29	30	31	

MARCH							
EPI Week #	Sun	Mon	Tue	Wed	Thu	Fri	Sat
9		1	2	3	4	5	6
10	7	8	9	10	11	12	13
11	14	15	16	17	18	19	20
12	21	22	23	24	25	26	27
13	28	29	30	31			

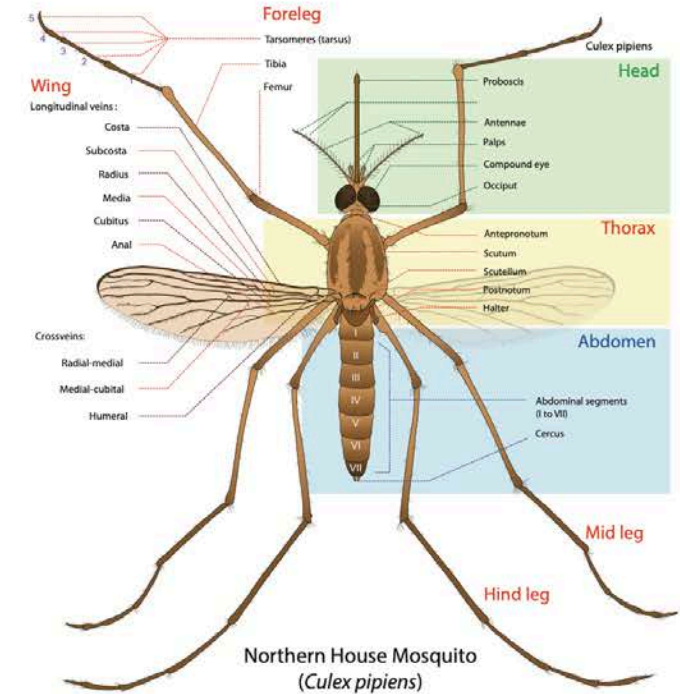
AUGUST							
EPI Week #	Sun	Mon	Tue	Wed	Thu	Fri	Sat
31	1	2	3	4	5	6	7
32	8	9	10	11	12	13	14
33	15	16	17	18	19	20	21
34	22	23	24	25	26	27	28
35	29	30	31				

APRIL							
EPI Week #	Sun	Mon	Tue	Wed	Thu	Fri	Sat
13					1	2	3
14	4	5	6	7	8	9	10
15	11	12	13	14	15	16	17
16	18	19	20	21	22	23	24
17	25	26	27	28	29	30	

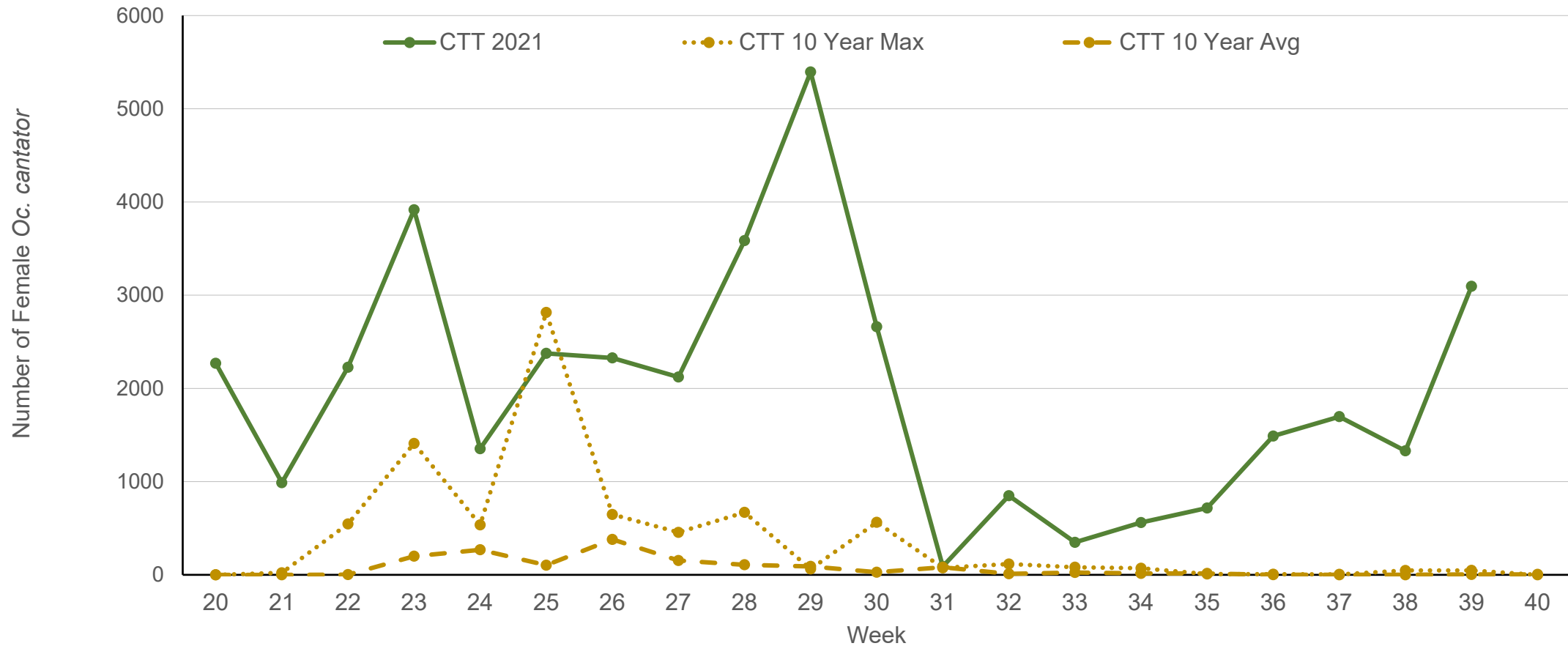
SEPTEMBER							
EPI Week #	Sun	Mon	Tue	Wed	Thu	Fri	Sat
35				1	2	3	4
36	5	6	7	8	9	10	11
37	12	13	14	15	16	17	18
38	19	20	21	22	23	24	25
39	26	27	28	29	30		

MAY							
EPI Week #	Sun	Mon	Tue	Wed	Thu	Fri	Sat
17							1
18	2	3	4	5	6	7	8
19	9	10	11	12	13	14	15
20	16	17	18	19	20	21	22
21	23	24	25	26	27	28	29
22	30	31					

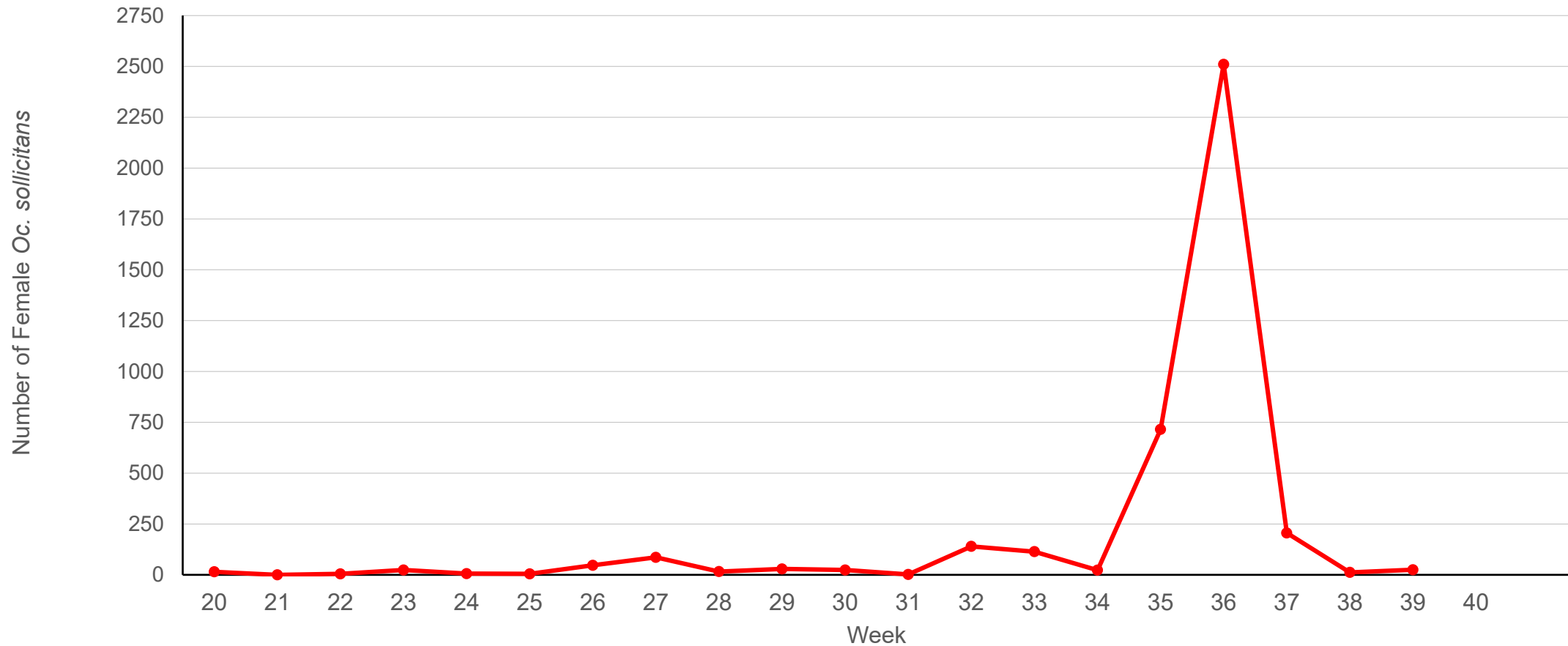
OCTOBER							
EPI Week #	Sun	Mon	Tue	Wed	Thu	Fri	Sat
39						1	2
40	3	4	5	6	7	8	9
41	10	11	12	13	14	15	16
42	17	18	19	20	21	22	23
43	24	25	26	27	28	29	30
44	31						



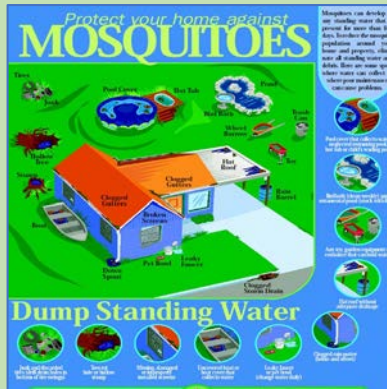
Number of *Ochlerotatus cantator* Caught by Week Herring River Trap Site



Number of *Ochlerotatus sollicitans* Caught by Week Herring River Trap Site



Cape Cod Mosquito Control- Integrated Pest Management



Education
Year round

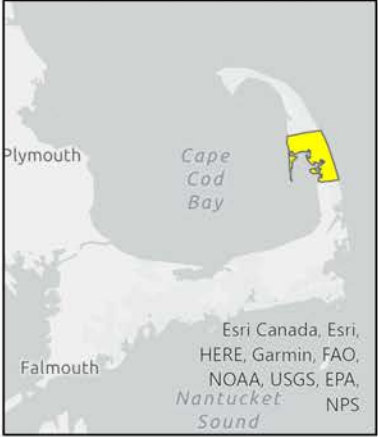


Water Management
October-March



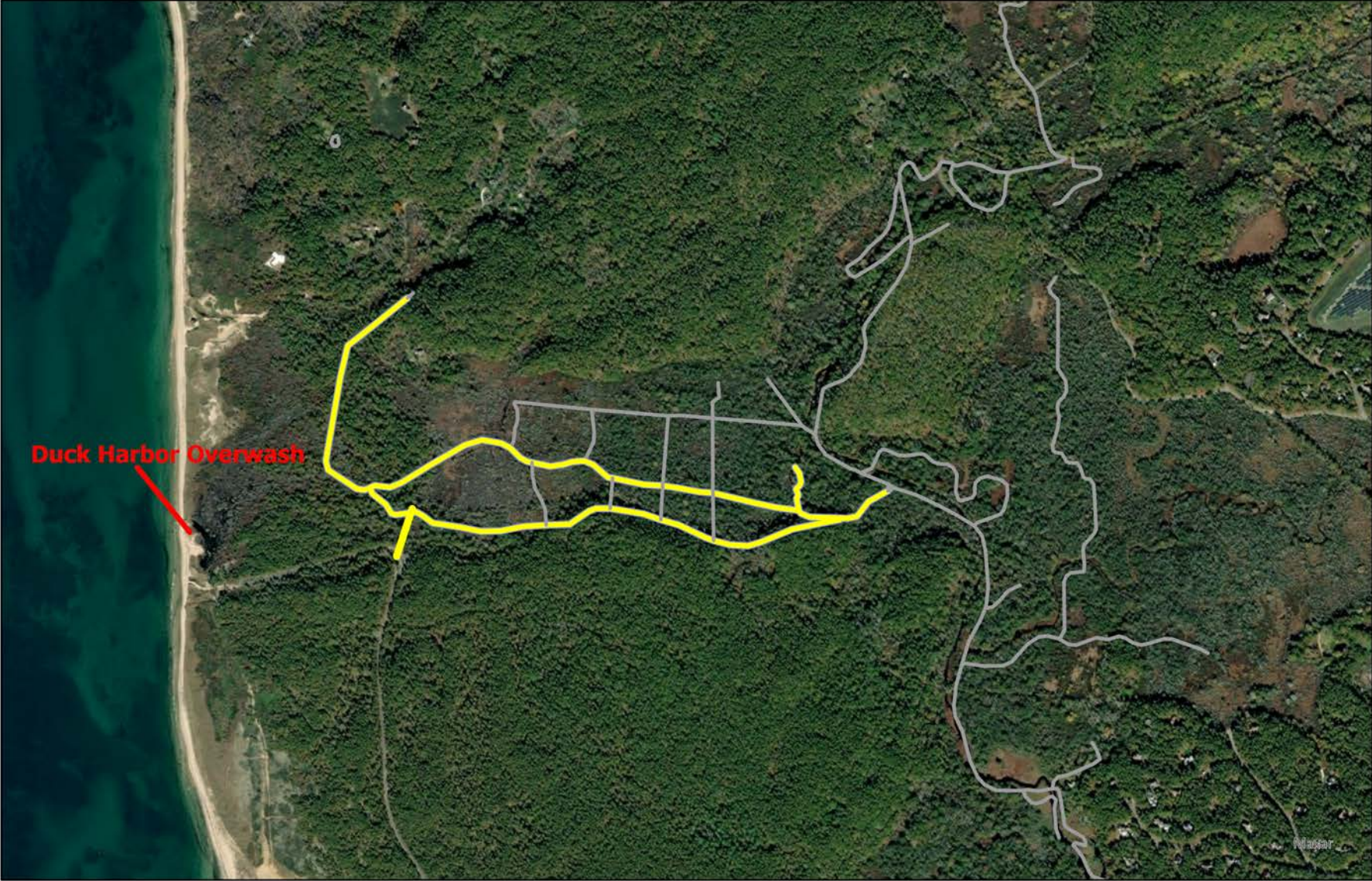
Larvicide
April-September

Duck Harbor Ditch System

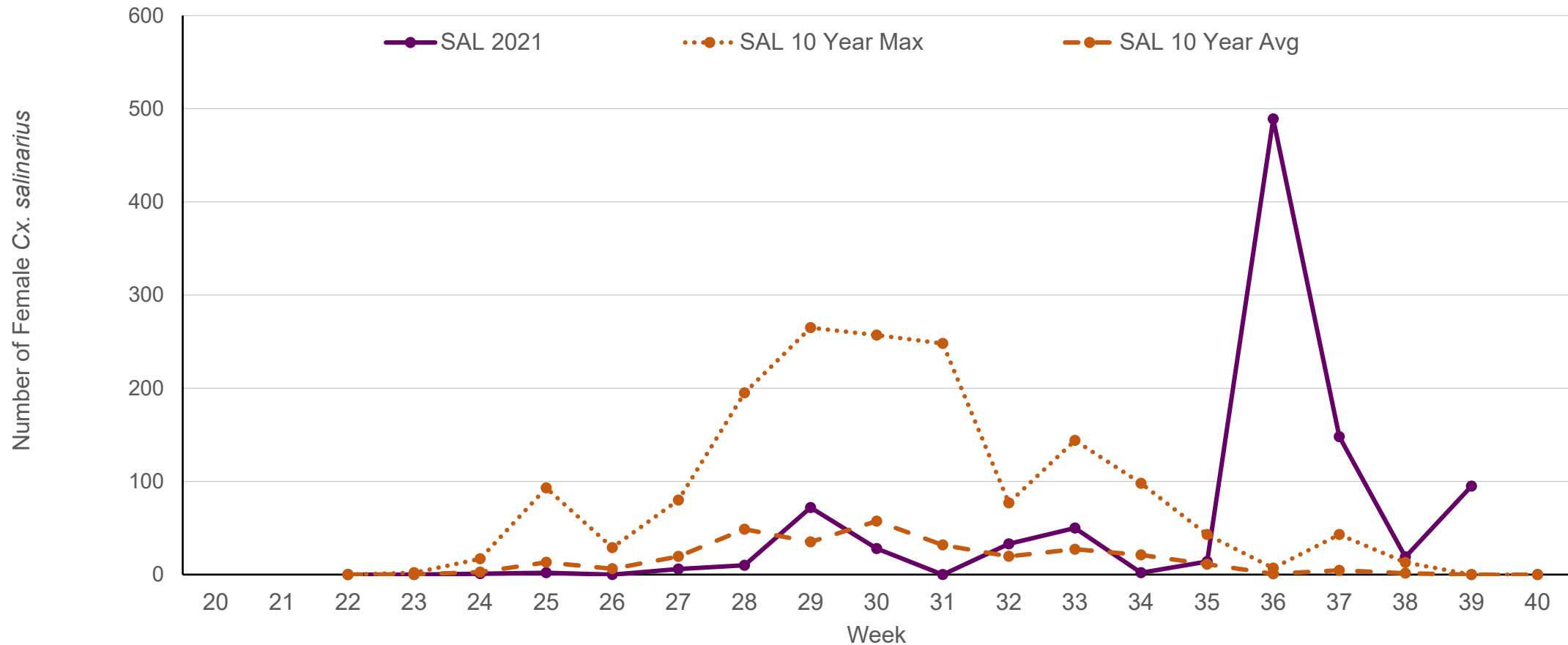


Duck Harbor Access

- Proposed Access
- Historic Ditches



Number of *Culex salinarius* Caught by Week Herring River Trap Site



https://www.mass.gov/info-details/massachusetts-arbovirus-update

WNV Risk Map created by the Massachusetts Department of Public Health MDPH/WNV Link MDAR Link

Find address or place

NEW YORK NEW HAMPSHIRE CONNECTICUT RHODE ISLAND

Franklin Hampshire Worcester Middlesex Suffolk Norfolk Plymouth Bristol Barnstable

Atlantic Ocean Massachusetts Bay Nantucket Sound

30mi -70.191 42.774 Degrees

About

How to use this Map:

- Type an address, community, or county into the search bar; or
- Click on a community on the map or in the table below to find the risk level.

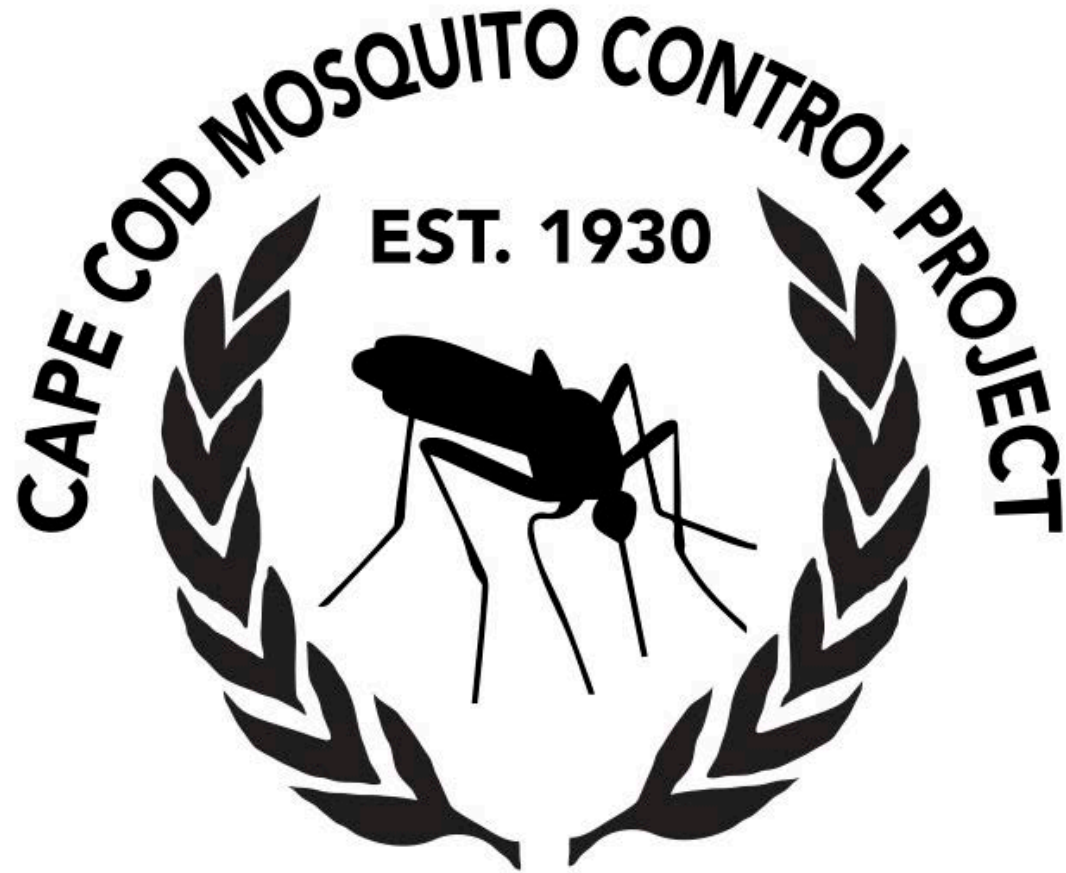
As you zoom in, the community names will replace the county names.

You can minimize both the *About* box and the *Attribute Table* to see just the map.

Risk Levels for WNV:

To Learn more about what the levels mean, visit [Key to Color Coding on WNV Risk Map](#) | [\(Accessible version\)](#)

Blue - Low
Yellow - Moderate
Orange - High
Red - Critical



259 Willow Street; Yarmouth Port, MA 02675

Office: 508-775-1510

gsakolsky@ccmcp.net

www.ccmcp.net

